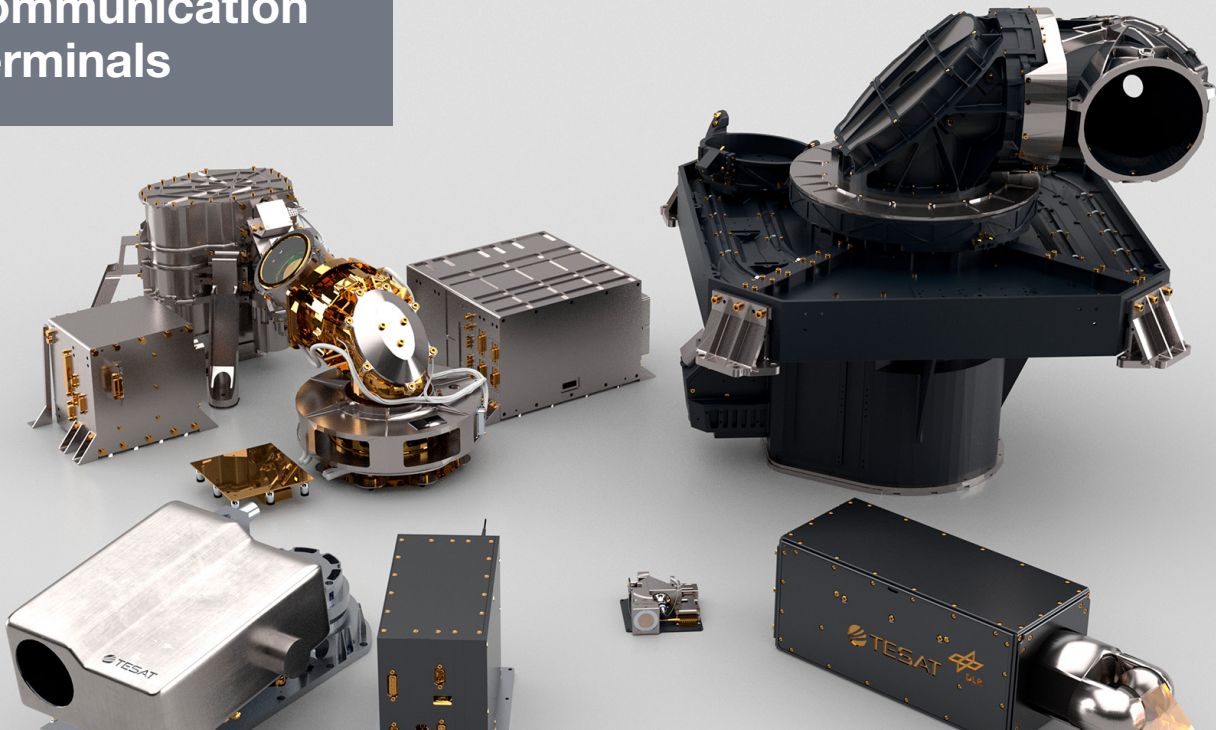


# Optical Communication Terminals



# Customer Value

- Heritage and Reliability – Ten's of Thousands Links delivered.
- Dramatically Increased Bandwidth from Mbps to 100Gbps+
- Solutions for all Orbits and Mission Needs
- LPI/LPD Communication Addressing A2/AD Challenges
- Continuity of Operations in RF Congested / Contested Environment
- Innovative, Rapid, Low Risk, Solutions
- Support of Standards: CCSDS and SDA

# Availability

- Delivering Optical Links in Space for More Than a Decade
- Hardware Available Now
- Modular Designs Allows for Customized Solutions Based on Sub-System Building Blocks



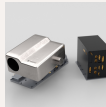
Existing OCT Volume Production Capability

Contact:  
Michael Dowd, Michael.Dowd@TESATGov.com



# OCT Solutions

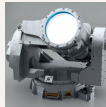
## SCOT80



## CONSTELLATION

8,000km +  
Up to 10 Gbps  
15 kg  
80 W

## SCOT135



## SCALABLE LCT

80,000km  
Up to 100 Gbps  
40 kg  
300 W

## SCOT20



## DIRECT-TO-EARTH CUBE SOLUTION

1,500km +  
100Mbps (DTE) / 1Mbps (up)  
0.4 kg  
8 W

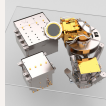
## LCT135



## DATA RELAY BACKBONE

80,000 km  
Up to 3.6 Gbps  
53 kg  
150 W

## LEO SMART LCT 70



## DATA RELAY-LEO USER

45,000km  
1.8Gbps  
30 kg  
130W